



— THE MANOR HOMES AT —
JOLLIFF
LANDING

WELCOME TO YOUR DREAM HOME

These stunning single-family homes with resort style amenities offer the lifestyle you have been searching for. The 361 homes boast high-quality construction with the finest details including gourmet kitchens, luxurious soaking tubs and open floor plans. Throughout the charming, tree-lined neighborhood are an assortment of exceptional amenities including a resort-style pool, walking trails, pocket parks and plazas with outdoor seating, a playground, state-of-the-art clubhouse with kitchen, conference room, fitness center, and natural preservation areas. Don't miss your chance to be part of this new, exciting community.



JOLLIFF
LANDING
— AT WESTERN BRANCH —

A VIBRANT NEIGHBORHOOD DESIGNED FOR YOU

Jolliff Landing is a dynamic new mixed-use community in Western Branch. The community is comprised of gorgeous single-family homes, beautiful townhomes, and luxury apartments for rent. Just down the road you'll find an array of shops, restaurants and booming commercial development. Conveniently located near I-664 and all of Hampton Roads, you will find yourself within 30 minutes of Portsmouth, Norfolk, Virginia Beach and the Peninsula. Enjoy being tucked away from the city where you can appreciate a life of tranquility with easy access to everywhere you need to be.



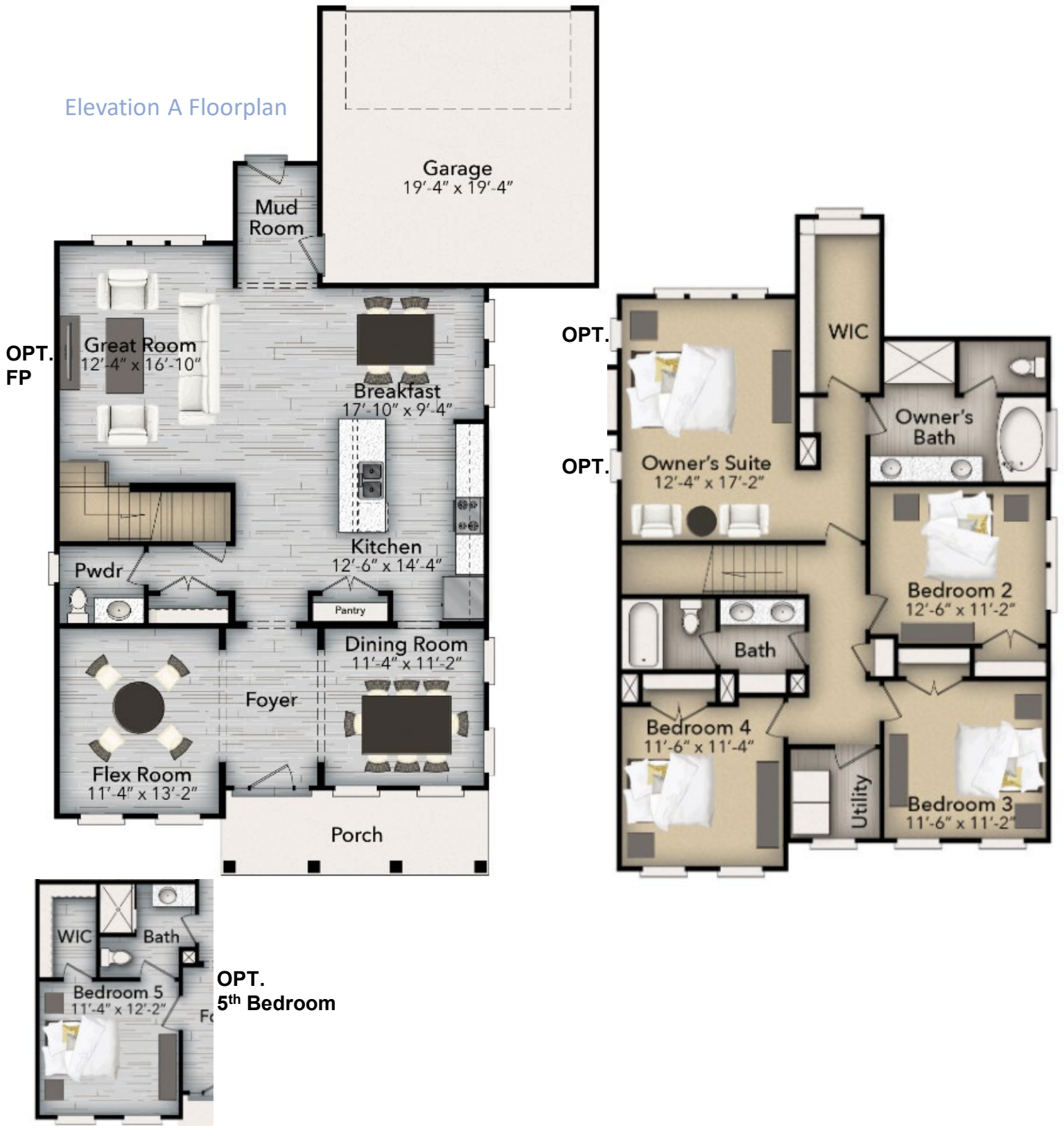
CORINTH RESIDENTIAL

While your home will be brand new to you, building quality homes is far from new for Corinth Residential. For over half a century the company is a leading homebuilder in Virginia. It all began with two brothers who were determined to live the American Dream of creating a business and inspiring people's lives. They started with nothing, but with their commitment and hard work created a company of dedicated, highly experienced people who have delivered exceptional homes to thousands of people. The integrity and drive of the founding principals is innate in the second generation in the business. They have maintained a lasting legacy of superior customer service and quality craftsmanship. The portfolio of remarkable homes in award winning neighborhoods is a testament to their ongoing commitment to excellence.

EXCEPTIONAL HOMES



Elevation A Floorplan





Avon, Elevation A



Avon, Elevation C



Avon, Elevation B

BUXTON 4 2,194 Sq Ft \$ _____



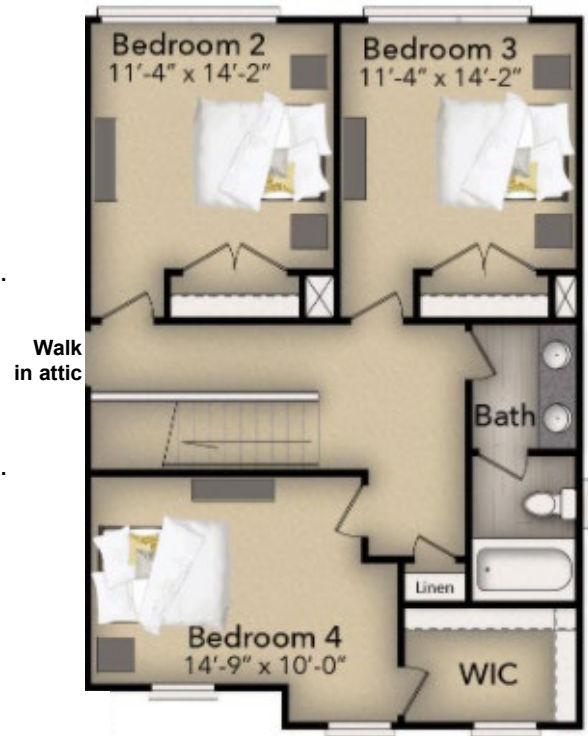
Buxton 4, Elevation A



Buxton 4, Elevation B



Elevation A Floorplan



BUXTON 5 2,661 Sq Ft \$ _____



Buxton 5, Elevation A



Buxton 5, Elevation B



Elevation A Floorplan

FINE FINISHES



EXTERIORS

- James Hardie fiber cement siding
- Architectural coordinated board & baton with shake accents*
- Shutters*
- Covered front porch*
- Finest quality architectural 30-year roof shingles
- Metal wrapped cornice, vinyl soffits and porch ceilings*
- Spacious driveways
- Gutters and downspouts
- Insulated decorative raised panel steel garage door
- Water hose connection front & rear
- Oversized windows for abundant natural light
- Fully sodded & professionally landscaped yard
- Weather proof electrical outlets front & rear
- Concrete patio
- Decorative handle set on front entry door
- Community Mailbox cluster



INTERIORS

- Finished 2 car garage w/ painted walls
- 9' ceilings first & second floor
- Textured walls and ceilings (Except kitchen and baths)**
- Cased doors standard (Upgraded cased windows & openings available)
- Luxury Vinyl Tile in great room, kitchen, dining room, powder room and select areas throughout first floor**
- Pre-wire for fan & light in all bedrooms & family room
- Overhead lights in bedrooms
- Lighted walk-in closets & shelving
- Separate laundry room & linen closet*
- Designer 2 tone wall paint
- Upgraded stain resistant carpeting
- Two panel interior doors
- Optional gas fireplace with mantle*
- Brushed nickel lighting fixtures
- Nickel lever style interior door hardware



KITCHENS & BATHS

- Stained custom crafted maple cabinets in kitchen & baths **
- 42" upper cabinets in kitchen
- Recessed can lights in kitchen
- Large under mount stainless sink w/ garbage disposal
- Single-lever Delta faucet w/ spray attachment
- Granite counters in kitchen (Quartz Upgrades Available) **
- Under cabinet lighting in kitchen
- Stainless steel appliance pkg (gas range, built-in microwave & 5 cycle dishwasher)**
- Ice-maker supply line
- Cultured marble in baths (Granite or Quartz upgrade available) **
- Easy care fiberglass tubs & showers*
- Luxurious oversized soaking tub & separate shower in master bath **
- Elongated toilets in all bathrooms
- Oversized mirrors in bathrooms
- Upgraded Delta faucets in master bath
- Dual sinks in master & second floor hall bathrooms*



OTHER FEATURES

- Dead bolt locks on exterior doors
- Pre-wired for garage door opener
- Smoke detectors
- Copper wiring throughout
- Energy efficient gas heat & hot water
- 14 seer energy efficient central air conditioning – 2 zone HVAC system (One unit with electronic controlled damper system)
- Single hung insulated vinyl windows with screens
- Fiberglass insulated entry door
- Water saving toilets and faucets
- Energy saving insulation in ceilings & exterior walls
- Manufactures warranties, where applicable
- HVAC Supply Lines sealed & insulated
- House wrap with air & moisture barrier
- QBW 10 year warranty program
- One year builder warranty with dedicated Customer Service Department

*PER PLAN

** UPGRADES AVAILABLE



—THE MANOR HOMES AT—
JOLLIFF
LANDING

SITE PLAN



Location Location Location



Shopping & Food

1. OneLife Fitness
2. Lowes
3. Regal Cinema
4. Kroger Market Place
5. Farm Fresh
6. College Drive Shops & Restaurants
7. Harbor View
8. Cracker Barrel

9. Chesapeake Square
Including: Target, Food Lion, Best Buy, Red Robin, Outback Steakhouse, JC Pennys, Toys R Us, Old Navy, Plaza Azteca, Surf Rider, Various Fast Food Centers, Services including Banks, Beauty, Auto Care, Pet Care, and more...



Recreation & Activities

1. Riverfront Golf Club
2. Sleepy Hole
3. Bennets Creek Park
4. Cinemark Theater
5. Western Branch Community Center
6. Portsmouth City Park
7. Marlin Club